



# VIKING Evacuation Slide

## Product Guide



VIKING LIFE-SAVING EQUIPMENT A/S

WHEN IT COMES TO  
**safety**  
THINK VIKING™



# Welcome to the VIKING advantage



**When you choose VIKING life-saving equipment you choose a sound long term investment. VIKING is an innovator in life-saving systems and has more than four decades of experience in supplying first class equipment to the passenger and cruise sector.**

We offer a choice of product packages and systems that are standard or tailor made, and certified to the latest requirements of all international standards. Our product scope ranges from top of the line latest innovations to standard and basic options.

## **Unique easy to handle marine evacuation systems (MES) for all vessel types and sizes.**

Every second is critical when abandoning ship at sea. Getting the maximum number of passengers and crew safely evacuated in the minimum amount of time is the priority.

It is essential that high capacity life-saving equipment is easy to handle by the minimum of crew to ensure safe and rapid evacuation of all on board.

VIKING's advanced evacuation systems provide fast and easy evacuation, exceptional stability and are trusted by passengers and crew worldwide.

## **Truly global network**

The unique VIKING network of subsidiaries, agents and 270 authorised servicing stations, make us a truly global provider offering cost-effective and convenient service when and where you need it.

# VIKING Evacuation Slide



*The platform can receive evacuees before the liferafts are fully inflated, saving valuable time.*

**The VIKING Evacuation Slide, or VES, is designed to enable passengers and crew to quickly and safely board liferafts directly from onboard ship.**

## Ultra safe slide

VIKING's VES system is ultra safe. The dual track slide consists of 12 main tubes with 8 separate compartments that are individually inflated. This means that the slide's stability is not compromised in the unlikely event that the slide becomes punctured in any one place.

## Slide angle for ultimate stability

The angle between the slide and the ship ensures that the system can absorb the movement between ship and even high seas.

## Platform doubles as rescue unit

The slide is connected to 100 person self-draining platform. In addition to being the landing base from the slide and entry platform for the liferafts, the platform itself can be cut free from the slide and function as a supplementary rescue unit.

## Hard wearing, well-proven design

The steel or aluminium structure is resistant to seawater corrosion. The slide system has a long life expectancy and is constructed from hard wearing materials.

## Efficient and simple to operate

Exhaustive trials onshore and at sea have proven its evacuation efficiency and its ability to remain stable even in very rough seas. It is simple to operate and The VIKING Evacuation Slide, or VES, is designed to enable passengers and crew to quickly and safely board liferafts directly from onboard ship. The platform can receive evacuees before the liferafts are fully inflated, saving valuable time. requires few trained crew members.

## Single handle activation

One handle turn releases pressured nitrogen (N2) that opens the system door. The slide is pulled out and immediately starts to inflate with nitrogen (including 50% over capacity) and air aspirators. The slide system does not require an external power supply.

The evacuation slide is developed, engineered and manufactured to comply with the latest international legislation for safety and complies with international marine safety regulations.



The VES system can be fitted at extreme forward and aft positions – for example over the propeller.

### Flexible installation

The 30° angle of the slide also means that the evacuation slide system can be installed at extreme forward and aft positions. Liferafts are stored on racks and can be positioned separately from the evacuation system, in an open recess for example, and remotely released and bowsed in when required.

Installation heights are from 6 to 15m above waterline\*.

### Means of rescue

The slide can also be used as a means of rescue. Side grab lines the length of the slide means that people can be rescued from the water and evacuated on board ship. Specially designed stretchers are available for the system that allow for rescue from the water to ship for those unable to pull themselves on the grab lines.

\* Calculated from lightest sea condition to installation deck.



The dual track system is easy to operate and requires few trained crew members.

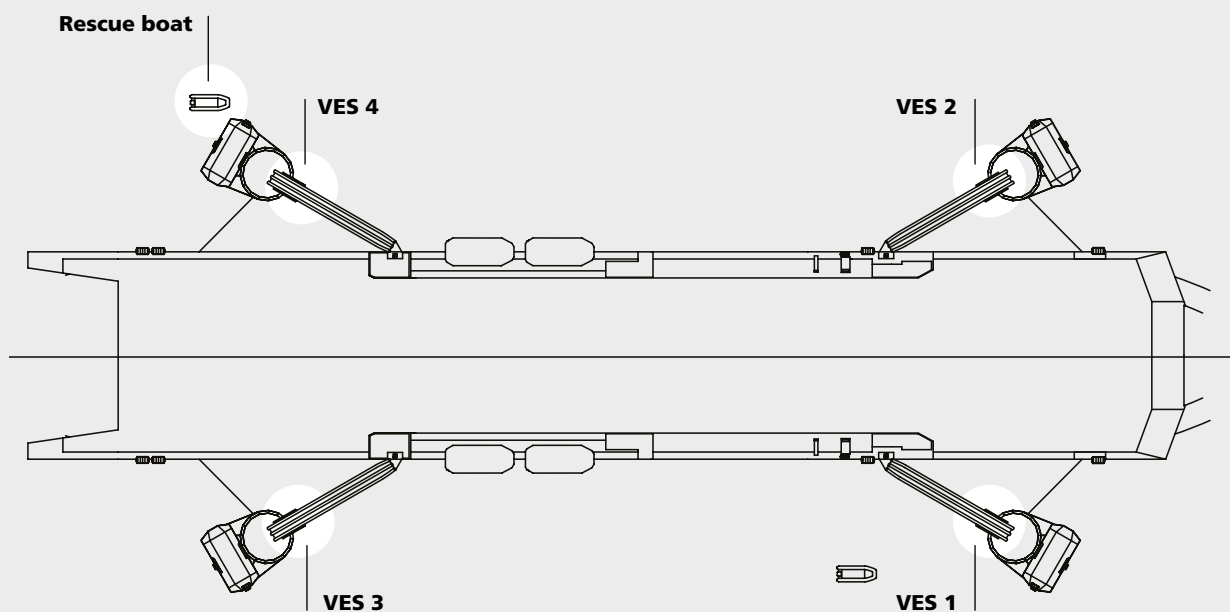
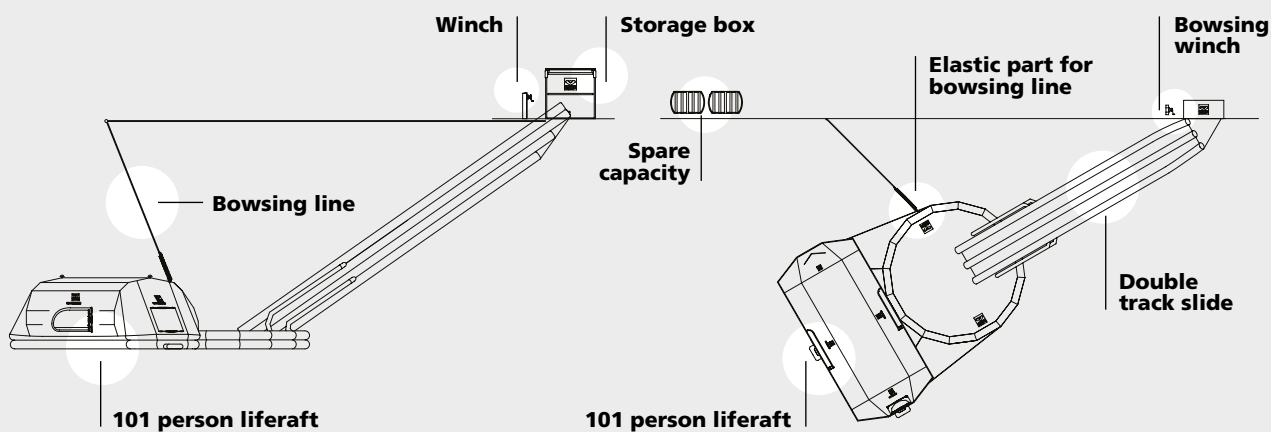
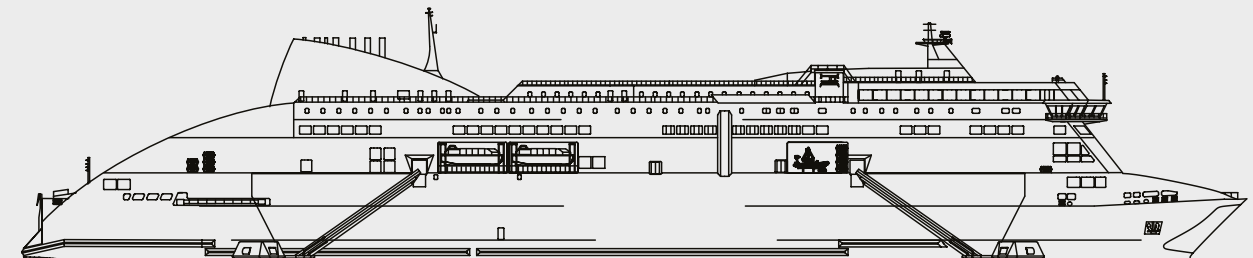


People can be evacuated from the water on board ship, by stretcher if necessary.

### System features:

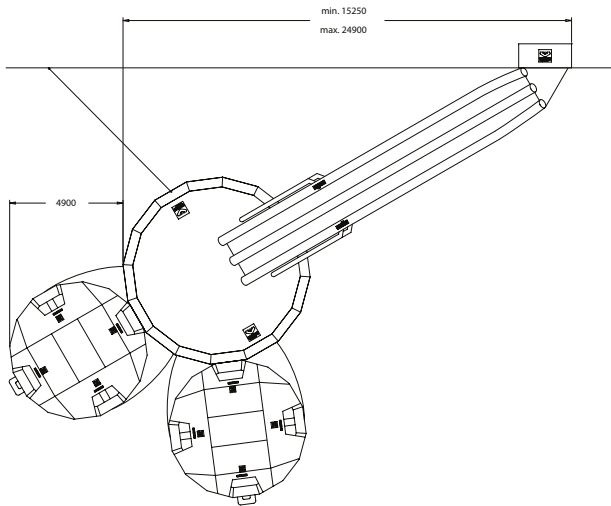
- Evacuates 657 people within 30 minutes, or 386 people within 17 min 40 sec
- Extremely stable, even in very rough seas
- Simple to operate
- Requires few crew members
- Can be installed at extreme forward and aft positions
- Flexible installation and capacity
- Can be used as means of rescue (MOR)
- Complies with all international regulations
- Can be used in combination with a wide range of different liferaft types

# Flexible installation

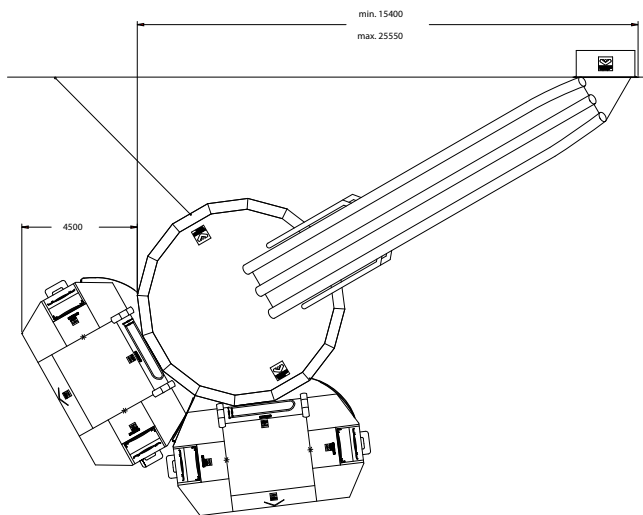


# Slide and liferaft combinations

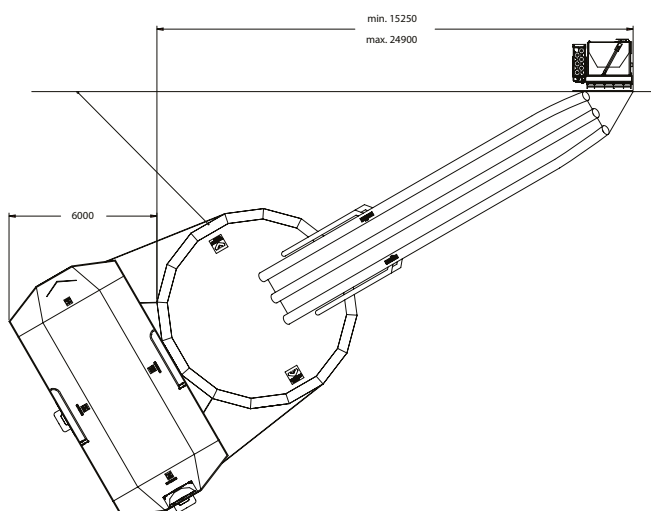
Slide evacuation systems can be tailor made to suit your individual needs. Here are some examples of how they can be set up.



Dual track slide with 2 x 51 person liferafts Steel box, free on deck



Dual track slide with 2 x 51 person liferafts Steel box, built in



Dual track slide with 1 x 101 person liferaft Aluminium box, built in

**Systems:** Slide length: 12 – 25.5m,  
Evacuation capacity: 657 people in 30 minutes

# VES Free on Deck System Type 3.3

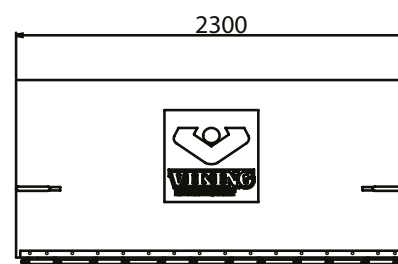
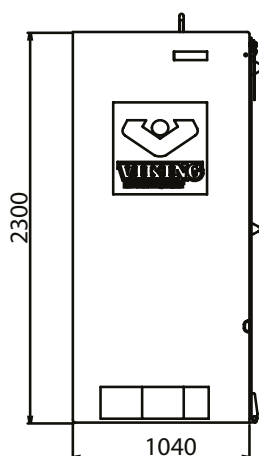
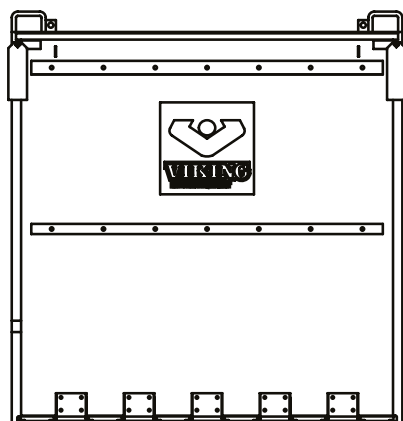


## For more flexible installation

This system is for free on deck installation or can be built into an open recess in the ship's side. It can be installed near to other free on deck life-saving equipment. Protection from the elements is provided by the outer box and requires therefore no additional cove

## Dimensions

Length: 2300 mm  
 Height: 2300 mm  
 Depth: 1040 mm  
 Weight: 12m slide: 3250 kg  
 25.5m slide: 3500 kg





# VES Built In (Standard) System Type 3.3

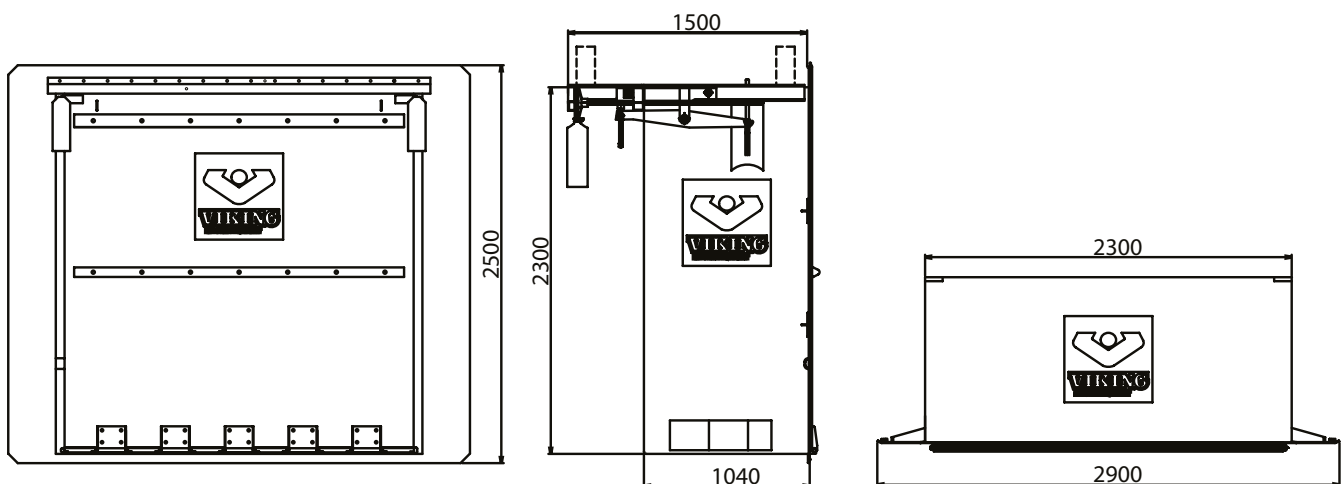


## Direct access from the accommodation area for fast evacuation

The system is designed for installation directly into the ship's side. Passengers and crew can access the slide and the liferafts directly from the accommodation area. The access door sits spray-tight and flush to the exterior of the ship when not in use thanks to the system's coaming design

### Dimensions

|                 |                     |
|-----------------|---------------------|
| BoxLength:      | 2300 mm             |
| Height:         | 2300 mm             |
| Depth:          | 1040 mm             |
| Weight:         | 3350 kg 12m slide   |
|                 | 3600 kg 25.5m slide |
| Coaming Length: | 2550 mm             |
| Height:         | 2570 mm             |



# VES Built In (Low Installation) System Type 3.3

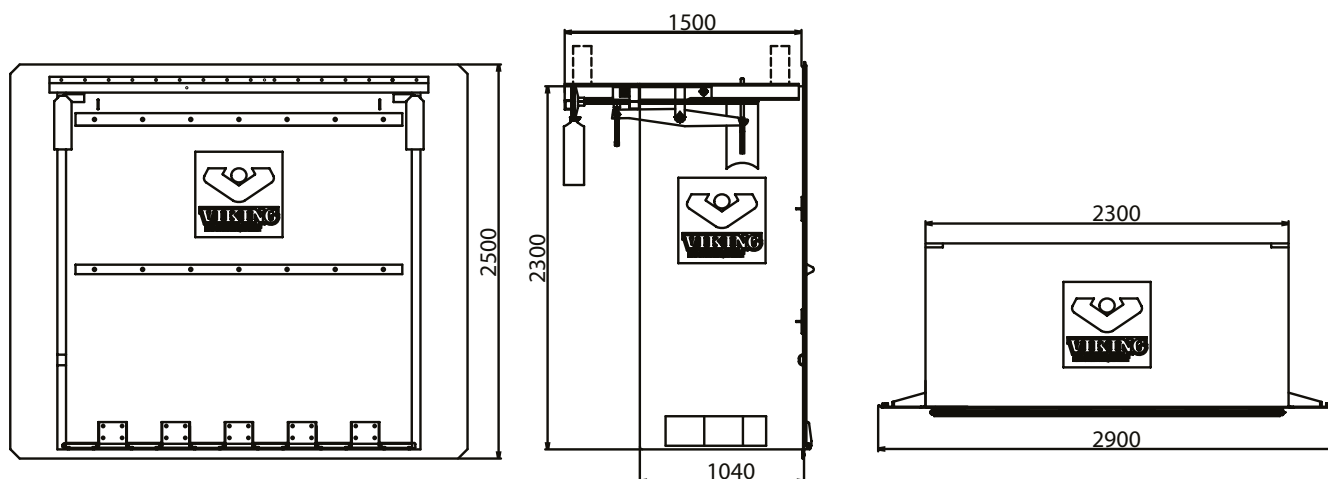


## Designed especially for ships with low height between decks

The built in design of this system provides fast, safe access to the evacuation slide and high capacity liferafts. Evacuees can access the slide directly from the ship's accommodation area. The low installation system can fit into recesses with lower clearances than the VES Built In (Standard).

### Dimensions

|                 |                     |
|-----------------|---------------------|
| Box Length:     | 2300 mm             |
| Height:         | 2300 mm             |
| Depth:          | 1040 mm             |
| Weight:         | 3350 kg 12m slide   |
|                 | 3600 kg 25.5m slide |
| Coaming Length: | 2900 mm             |
| Height:         | 2500 mm             |



# VES Alu Built In Aluminium System Type 3.3

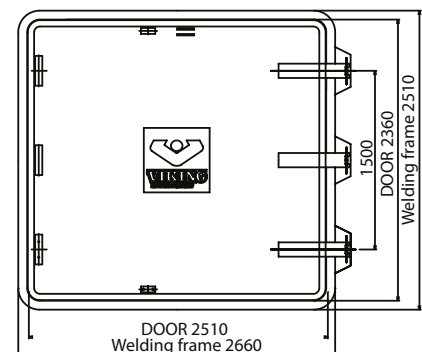
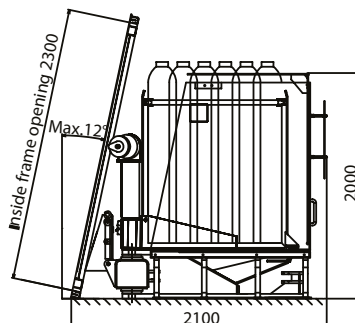
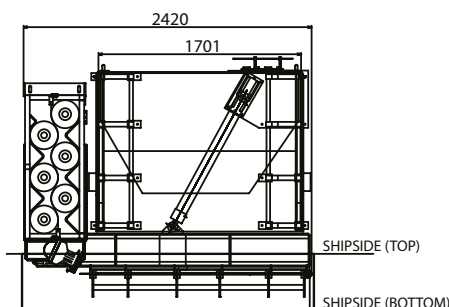


## Designed especially for high speed craft

This system is intended for use on high speed vessels where direct access and low weight are essential. The built in installation provides access directly from the accommodation area to the evacuation slide and liferafts. The entry door sits flush to the ship's exterior and is spray-tight when not in use.

### Dimensions

|         |                        |
|---------|------------------------|
| Length: | 2420 mm                |
| Height: | 2000 mm                |
| Depth:  | 2100 mm                |
| Weight: | 1950 kg    12m slide   |
|         | 2200 kg    25.5m slide |
| Door    |                        |
| Length: | 2510 mm                |
| Height: | 2360 mm                |



# System in action

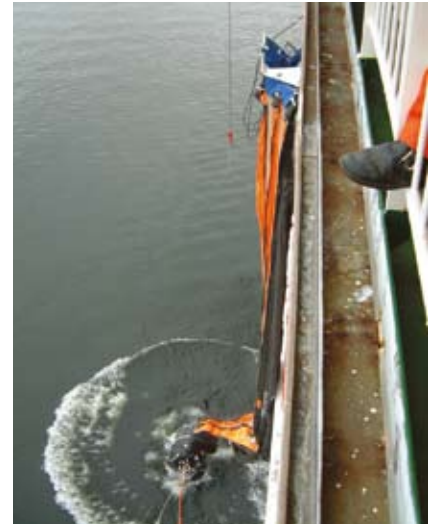
## Deployment in 6 easy steps:



**1** *Deploy the VES system by simply pulling the handle.*



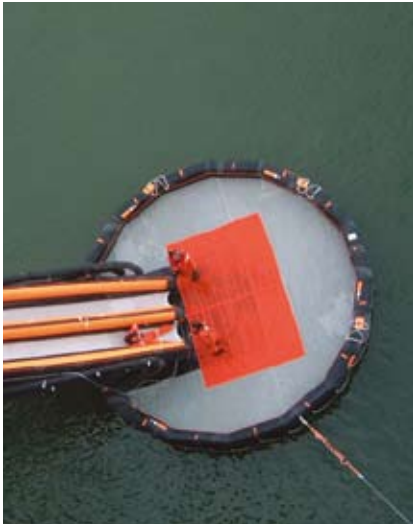
**2** *The front door opens, pulling the slide and platform out of the stowage box.*



**3** *The slide and platform drop into position and immediately start to inflate.*

It requires just one crew member pulling on the release handle to commence deployment of the VIKING evacuation slide.

The first steps are entirely automatic, from the gas release of the covering front door to the descent and inflation of the slide and platform.



**4** From pulling the handle to full inflation takes just 2-3 minutes.



**5** Release the liferafts using the Hammar remote release. The liferaft containers fall in the correct order from their racks. Pull the liferaft containers in to the slide platform.



**6** Attach the container to the platform and pull on the release line.

Just 2-3 minutes later, the slide and platform are inflated.

The platform itself can hold up to 100 people. Evacuation can commence before the liferafts are fully inflated and attached, saving valuable time.

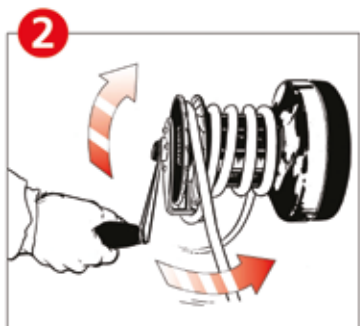
## Bowsing winches



**Bowsing winches are used to bowse the chute liferafts into position in relation to the ship's side.**

The winch and bowsing line ensure that the liferafts remain stable alongside the ship and are not moved out of position by the movement of the waves.

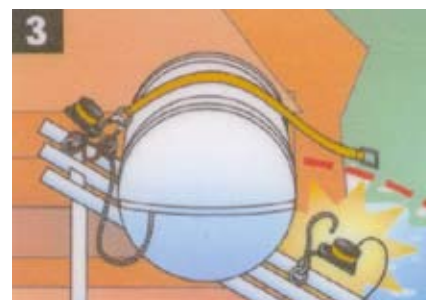
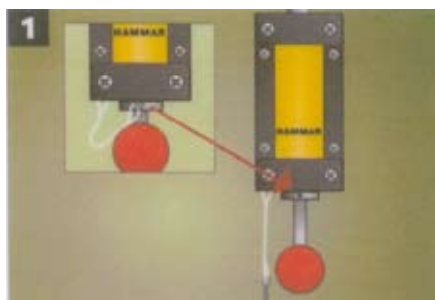
VIKING systems use Andersen Winches. In situations where every second counts, these lightweight stainless steel winches allow for rapid pay in of the line. Vertical ribs on the drum provide extra grip on the bowsing line, meaning that the winch needs turning fewer times.



The highly polished surface minimises the risk of jamming. The bowsing line slides easily up the self tailing drum, constantly pushed up by the following rope wind.

The spring loaded locking system in the handle means that the winch can be easily operated with one hand.

## Remote liferaft release

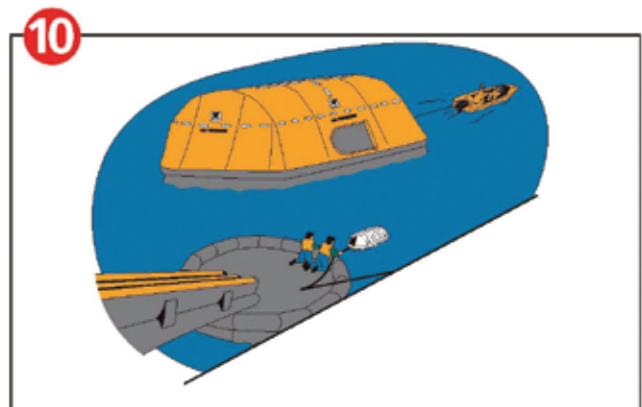
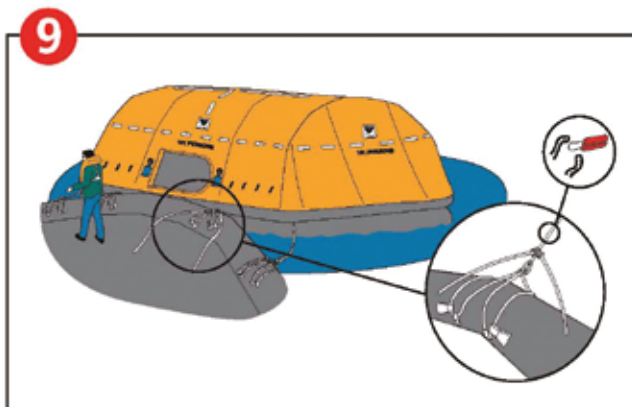
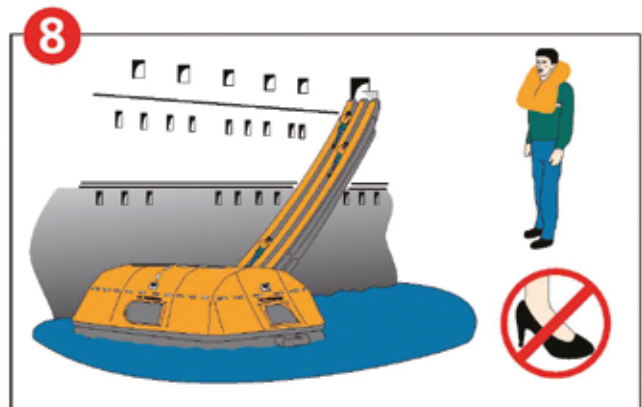
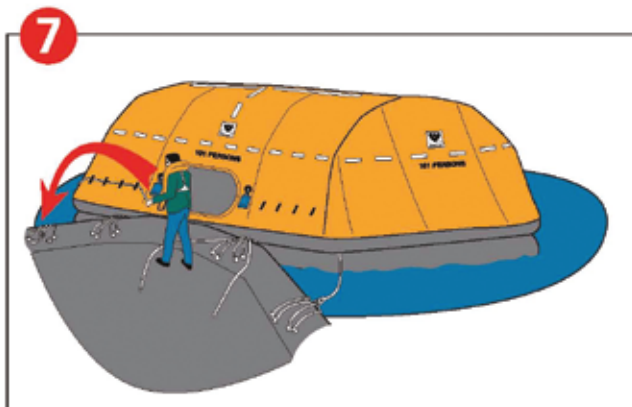
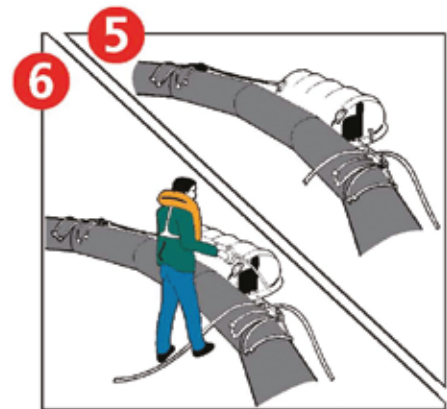
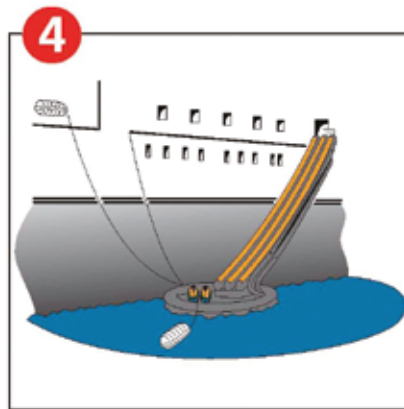
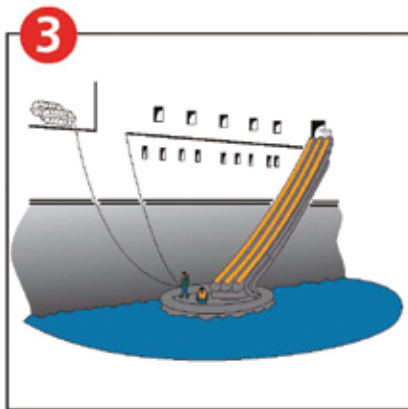
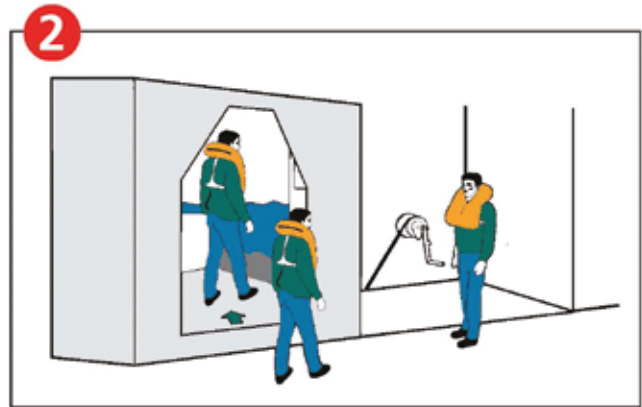
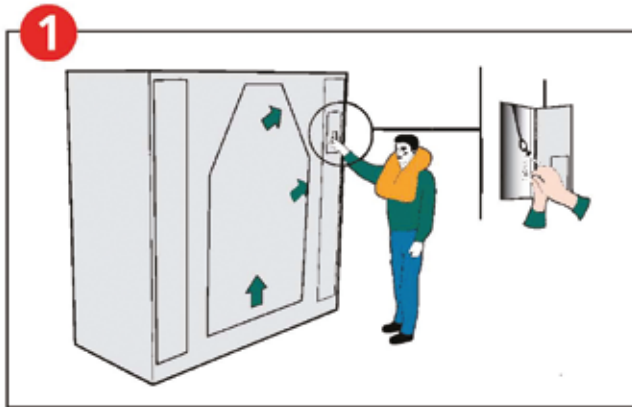


**Remote release systems allow liferaft containers to be stored far away from the MES system.**

They can be stored on racks anywhere on deck, in otherwise inaccessible locations, for example. The liferafts can be remotely released when required and are immediately ready to operate. VIKING systems use Hammar Manual Remote Release Systems (MRRS) to remotely release the liferafts for connection to the slide platform.

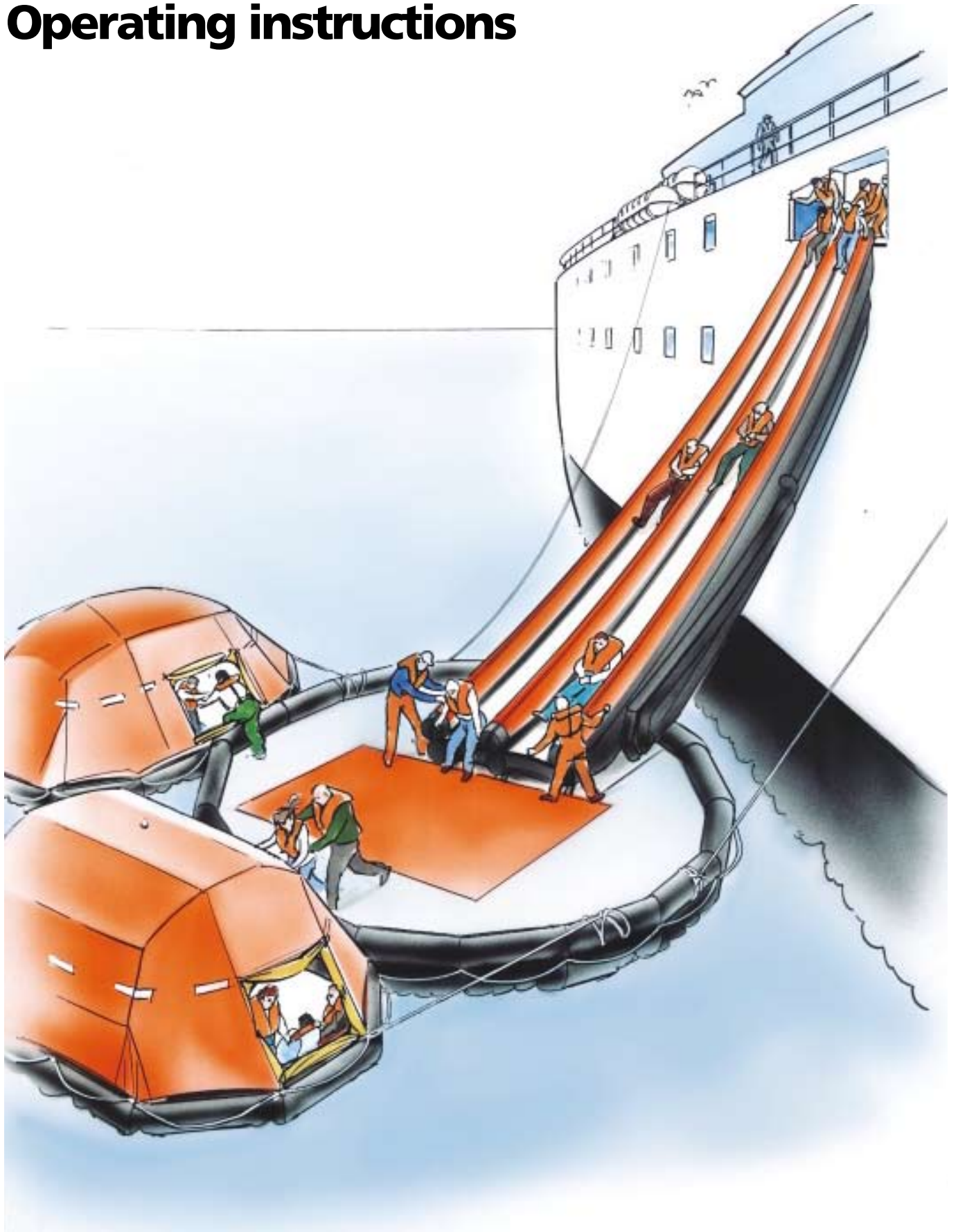
Pumping on the release system pump creates a vacuum which in turn activates the hydrostatic release unit. A sharp stainless steel knife within the unit cuts through the rope that holds the liferaft in place. The MRRS system is an effective and reliable method of releasing liferafts from their storage rack.

# Passenger instructions



Clear and easy to understand instruction posters are affixed the system and/or on the nearby bulkhead.

# Operating instructions



*The VIKING evacuation slide, or VES, system provides safe, rapid evacuation of passengers directly from on board ship.*



# Liferafts by VIKING

**Liferafts by VIKING VIKING's liferafts are found all over the globe - from the arctic to the tropics.**



VIKING's liferafts are available in a standard version and a top of the line automatically self-righting version. VIKING's proven self-righting liferafts ensure that no matter how the liferaft lands in the water it will always right itself ready for boarding. All liferafts are equipped with a hydrostatic release unit that makes it release automatically under water if it has not been released manually.

## Evacuation system liferafts

The wide range of liferaft types suitable for use with the slide system ensures that the VIKING evacuation slide system is flexible and suitable for all types of passenger carrying vessels.

Suitable liferafts include:

- 25 and 51 person canopied liferafts
- 25, 51 and 101 person self-righting liferafts
- 25, 51 and 101 person open reversible liferafts

Liferafts are subjected to rough sea trials and deployed at extremely low temperatures. Self-righting liferafts are also tested for automatic self-righting.

## Standard features

- Equipped with emergency packs and additional liferaft equipment according to SOLAS requirements
- Provided with at least two individual buoyancy compartments. If one of the compartments is damaged, there will be sufficient buoyancy to carry the specified number of passengers
- Stored in a rigid fibreglass container for durability
- Installed onboard either on cradles and racks, or stacked on top of each other
- Average lifespan is 18-20 years

# VES Certificates

**TRANSPORT CANADA**  
**BOARD OF STEAMSHIP INSPECTION**  
**CERTIFICATE OF APPROVAL**

**TRANSPORTS CANADA**  
**BUREAU D'INSPECTION DES NAVIRES À VAPEUR**  
**CERTIFICAT D'APPROBATION**

CERTIFICATE NO.  
 CERTIFICAT N° **T.C.127.065.002**

PAGE **1** OF **3**

THIS CERTIFIES THAT THE ITEM SPECIFIED HEREIN HAS BEEN APPROVED BY THE BOARD OF STEAMSHIP INSPECTION, IN ACCORDANCE WITH THE PROVISIONS OF THE CANADA SHIPPING ACT AND REGULATIONS MADE THEREUNDER AND SUBJECT TO CONDITIONS SET FORTH ON THE REVERSE SIDE.

LES PRÉSENTES FONT SAVOIR QUE L'ARTICLE MENTIONNÉ DANS LE PRÉSENT CERTIFICAT A ÉTÉ APPROUVÉ PAR LE BUREAU D'INSPECTION DES NAVIRES À VAPEUR, CONFORMÉMENT AUX DISPOSITIONS DE LA LOI SUR LA MARINE MARCHANDE DU CANADA ET DE SES RÉGLEMENTS D'EXÉCUTION ET SOUS RÉSERVE DES CONDITIONS PRÉSENTÉES AU VERSO.

ISSUED TO - TITULAIRE  
 VIKING LIFESAVING EQUIPMENT A/S  
 Saeding Røngevej, P.O. Box 3090  
 6710 Esbjerg, Denmark

ITEM - L'ARTICLE  
**MARINE EVACUATION SYSTEMS**  
**DD-MES, 12 - 14 - 15 - 16 - 18 - 20 - 22.5 - 25.5 M**

DESCRIPTION  
 DD-MES, Marine Evacuation System with dual track in

REMARKS - REMARQUES

1. Approval Certificate based on prototype units tests Norske Veritas Danmark A/S surveyor and review
2. Comply with SOLAS 74 as amended, Regulation II 2000HSC Code 8.1.
3. The validity of this Certificate is contingent upon I Certificate remaining in force.
4. Conditions of approval are specified on reverse side
5. Attached Schedule forms part of this Certificate.

The approval expires/approval number  
 La présente approbation expirera / Approbation n° **T.C.127.065.002**

This certificate is not transferable and is effective until  
 Le présent certificat ne peut pas être transféré et il n'est valable jusqu'au **May 31, 2011**

**May 1, 2006**  
 Issued

Transport Canada / Transports Canada

Transport Canada approval certificate.

The system also holds 160.175/EC/347/2813 United States Coast Guard approval.

**DET NORSKE VERITAS**  
**EC TYPE-EXAMINATION CERTIFICATE**

Application of: Council Directive 96/98/EC of 20 December 1996 on Marine Equipment as amended by directive 2002/75/EC, issued as "Forskrift om Skiputstyr" by the Norwegian Maritime Directorate. This certificate is issued by Det Norske Veritas under the authority of the Government of the Kingdom of Norway.

**CERTIFICATE NO. MED-B-4402**  
 This Certificate consists of 3 pages

This is to certify that the  
**Marine evacuation systems**  
 with type designation(s)  
**Viking Evacuation Slide, VES-DD**

Manufacturer  
**Viking Life-Saving Equipment A/S**  
 Esbjerg V, Denmark

is found to comply with the requirements in the following Regulations/Standards:  
 Annex A.1, item No. A.1/1.27 and Annex B, Module B in the Directive. SOLAS 74 as amended, Regulation III/4, III/15, III/26.2.1, III/34 & X/3, LSA Code and 2000 HSC Code 8.1, 8.7 & 8.10.

Further details of the product and conditions for certification are given overleaf.

Place and date  
 Høvik, 2008-02-26  
 for DET NORSKE VERITAS AS

Kristen Ulveseth  
 Manager, MTP/NO70  
 Department Systems & Components

Notified Body No. 0575

Frode Brattum  
 Surveyor

This Certificate is valid until  
 2009-12-31

DNV local office:  
 DNV Fredericia

Notice: The certificate is subject to terms and conditions overleaf. Any significant changes in design or construction of the product, or amendments to the Directive or Standards referenced above may render this certificate invalid. The product liability rests with the manufacturer or his representative in accordance with Council Directive 96/98/EC, as amended.  
 The Mark of Conformity may only be affixed to the product and a Declaration of Conformity may only be issued when the production/product inspection module referred to in the council directive, is fully complied with.

If any person affixes this or otherwise uses it in a way that is not intended by the notified body or in violation of the terms of this certificate, the manufacturer or his representative shall be liable for any damage or injury caused to third parties for the amount of the cost of the damage. The manufacturer shall be liable for any damage or injury caused to third parties for the amount of the cost of the damage. The manufacturer shall be liable for any damage or injury caused to third parties for the amount of the cost of the damage.

DET NORSKE VERITAS AS - VERITADVEEN 1, 1302 HØVIK, NORWAY - TEL: (+47) 67 96 00 - FAX: (+47) 67 96 11  
 Page 1 of 3

EC Type examination certificate  
 VIKING Evacuation Slide for  
 657 people within 30 minutes

# Liferaft Certificates



EC Type examination certificate  
101 person liferaft



EC Type examination certificate  
51 person liferaft

# VIKING Marine Evacuation

**Our marine evacuation systems are designed to evacuate passengers and crew as quickly and as safely as possible.**



## VIKING Evacuation Dual Chute (VEDC )

The evacuation dual chute, or VEDC, is VIKING's highest capacity chute system to date and is combined with 150 person high capacity liferafts for safe, rapid evacuation from large passenger carrying vessels. This unique design combines the highest evacuation capacity with discreet, compact and self-contained design for maximum safety and relatively little deck disruption.

Each VEDC system contains two 150 person liferafts. Capacity can be increased to suit the exact ship requirement with additional drop down liferafts.



## SOLAS liferaft system with slide (VELS+SMS )

This latest MiniSlide system is designed for middle and low embarkation vessels with independent slide and liferaft for increased capacity and installation flexibility.

The system requires only one crew member to operate and oversee evacuation. The new brake cushion system (patent pending) gives evacuees a clear stopping point at the bottom of the slide and a soft stop. The new MiniSlide system has a 150 person liferaft, available with or without canopy to suit both open sea and protected waters.

*VIKING's advanced evacuation systems provide fast and easy evacuation, exceptional stability and are trusted by passengers and crew worldwide.*

VIKING can provide tailor made or standard marine evacuation to suit the individual customer requirement.

The wide range of evacuation chutes, MiniChutes and slides means that VIKING is unique in providing evacuation systems to suit every type and size of vessel.



### The VIKING Evacuation Chute (VEC)

The telescopic nature of the reinforced Kevlar evacuation chute ensures a safe descent path and compensates for ship and sea movements so that evacuation is not obstructed. This system has the additional advantage of protecting evacuees from environmental hazards such as severe weather conditions, during evacuation and is fitted with a protective cover.

The system has 2 or 3 pre-incorporated 101 person liferafts for ease of operation. It is designed for installation heights of 5-20 m and has an evacuation capacity of 367 people in 30 minutes.



### The VIKING Evacuation Mini Chute (VEMC)

This system can be used by vessels with embarkation heights from 5–20m. It was originally designed for small and medium sized vessels and its flexible design means that it can be used even by larger vessels. The Mini Chute is similar to the VEC in evacuation performance. It has a pre-incorporated 101 person liferaft and can evacuate 356 people in 30 minutes.



### The VIKING Evacuation Mini Slide (VEMS)

This system is designed for small vessels operating in any sea condition. It is available with either a 101 man open reversible liferaft for vessels operating in sheltered waters or a SOLAS compliant 101 man self-righting canopied liferaft for vessels operating at sea.

It is compact, packed in a container the size of a standard liferaft container, simple to operate and fully operational within 2 minutes. The VEMS can evacuate 303 people in 17 minutes and 40 seconds.



### Davit launched liferafts (DKF, DKFS)

Davit launched liferafts are designed to be inflated and boarded at deck level, and then lowered into the water. They are available as self-righting canopied liferafts or standard canopied liferafts.

They are designed to carry 12, 25, 35 or 39 people and are an effective means of dry shod evacuation and can be either an alternative to chute or slide systems or a supplement.



### Throw overboard liferafts

Throw-overboard liferafts are designed to be dropped overboard in their container and inflated in the water.

Self-righting canopied rafts are available in six sizes; for 25, 51, 101 and 150 people. Standard canopied rafts are available in seven sizes; 6, 8, 10, 12, 16, 20, 25, 35 and 51 people. Open reversible liferafts, for use in sheltered waters are available for: 6, 12, 20, 25, 51, 101 and 150 people. Liferafts with capacities of 25 and above can be used as supplementary liferafts to all VIKING mass evacuationsystems.



### Direct boarding liferafts (DKS, DKR)

Direct boarding liferafts are typically used on board small passenger ferries. They are available either as open reversible large capacity liferafts or as self-righting canopied liferafts.

Both types are available in 25, 51, 101, and 150 person sizes.

They are mounted on racks on board ship and normally released from their cradles with a remote release system. They are then bowsed to the ship for direct evacuation from the deck to the liferaft.

# Discover the VIKING advantage

**VIKING is a market leader in maritime safety, providing essential safety equipment for passenger & cargo vessels, offshore installations, defence and fire fighting, fishing and yachting vessels.**



VIKING offers a choice of product packages and systems that are standard or tailor made, and certified to the latest requirements.

The VIKING headquarters are located in Denmark. Our products are manufactured at production facilities in Denmark, Norway and Bangkok, Thailand.

The unique VIKING network of subsidiaries, agents and 270 authorised servicing stations makes us a truly global provider offering cost-effective and convenient service when and where you need it.

*Our international headquarters in Denmark*



## Global service network

**An important consideration when investing in safety equipment is servicing in the long term.**

VIKING is a global all-in-one service provider offering consolidated servicing of safety equipment on board. We offer total concept service packages including global competitive pricing, handling specifications and service certificates.

Our unique network of 270 authorised servicing stations follows strict guidelines for servicing VIKING's products.

The network is supported by certified educational programmes, spare parts supply and continually updated online information and manuals.

All products delivered for servicing are subjected to thorough and comprehensive tests for total quality assurance.

Authorised servicing stations have the appropriate tools and spare parts available as turnaround time is important to our customers.

Service can be booked by contacting any of our offices in our global network.

Contact your local office for the nearest VIKING approved servicing station or see our website at [www.viking-life.com](http://www.viking-life.com)



# Dedicated global production

**Life-saving equipment is manufactured using combination of modern technology and skilled manual labour.**



*All our production facilities follow uniform guidelines and have identical systems and procedures.*

Our commitment to quality and safety and our loyal and experienced employees mean that our working atmosphere is quite exceptional.

VIKING practices integrated production with joint global planning. Particular speciality competences or special know how are concentrated at individual production units.

All our production facilities follow uniform guidelines and have identical systems and procedures. ISO 9001:2000 standard assures a consistent and standardised quality in accordance with specifications.



# Global logistics

**Our logistics network acts as one global unit with specialised systems for handling and tracking stock and delivery.**



*We are experienced in customising logistics for customers with centralised stock or several delivery points.*

VIKING's logistics specialists have the necessary certifications for optimising handling of products covered by the Dangerous Goods Act such as lifejackets and liferafts.

VIKING's worldwide stock points are geared to carry the appropriate stock for each market to ensure that our customers benefit from optimal delivery and pricing at appropriate locations.

**VIKING LIFE-SAVING EQUIPMENT A/S**

(Headquarters)  
Saedding Ringvej 13  
6710 Esbjerg V  
**Denmark**

Tel: +45 76 11 81 00  
Fax: +45 76 11 81 01  
e-mail: VIKING@VIKING-life.com

**VIKING LIFE-SAVING EQUIPMENT Ltd.**

Ferry House  
South Denes Road  
Gt Yarmouth, Norfolk – NR30 3 PJ  
**Great Britain**

Tel: +44 (0) 1493 850250  
Fax: +44 (0) 1493 851222  
e-mail: VIKING-uk@VIKING-life.com

**VIKING LIFE-SAVING EQUIPMENT Russia**

Gorelovo Industrial Zone, quarter 2,  
Volkhonskoe Shosse, 2B, bldg. 15,  
Lomonosov raion  
198323 Leningrad oblast,  
**Russia**

Tel.: +7 812 493 59 24  
Fax: +7 812 493 59 22  
e-mail: VIKING-ru@VIKING-life.com

**VIKING LIFE-SAVING EQUIPMENT China**

Unit 1206-07 CITS Building  
1277 Beijing West Road  
200040 Shanghai  
**PR China**

Tel: +86 21 6289 9922  
Fax: +86 21 6289 3597  
e-mail: ch@VIKING-life.com

**VIKING LIFE-SAVING EQUIPMENT Ltd.**

- **Southampton**  
Hamble Court, Hamble Lane  
SO31 4QL Southampton, Hampshire  
**Great Britain**

Tel: +44 (0) 2380 454184  
Fax: +44 (0) 2380 454284  
e-mail: VIKINGsth@VIKING-life.com

**VIKING LIFE-SAVING EQUIPMENT Pte LTD**

14 Loyang Way 4  
Loyang Industrial Estate  
**507601 Singapore**

Tel: +65 6424 9200  
Fax: +65 6424 9210  
e-mail: VIKING-sg@VIKING-life.com

**VIKING LIFE-SAVING EQUIPMENT Estonia AS**

Helgi tee 3,  
75312 Peetri küla,  
Rae vald,  
Harjumaa.  
**Estonia**

Tel: +372 670 36 22/670 36 23  
Fax: +372 670 36 26  
e-mail: eme@VIKING-life.com

**VIKING Life-Saving Equipment Ltd.,**

**Aberdeen**  
Unit 19, Ocean Trade Centre  
Minto Avenue, Altens  
AB12 3JZ, Aberdeen  
**Great Britain**

Tel: +44 (0) 1224 898969  
Fax: +44 (0) 1224 894565  
e-mail: VIKINGabz@VIKING-life.com

**VIKING Life-Saving Equipment (SA) (Pty) Ltd**

31 Carlisle Street, 7405 Paarden Eiland  
P.O. Box 1339  
8000 Cape Town  
**South Africa**

Tel: +27 21 5075879 / 5075765  
Fax: +27 21 5075878  
e-mail: VIKING-sa@VIKING-life.com

**VIKING LIFE-SAVING EQUIPMENT Oy, Finland**

Pääskykalliontie 13  
F-21420 LIETO  
**Finland**

Tel: +358-(0)2-489 500  
Fax: +358-(0)2 489 5011  
e-mail: VIKING-fi@VIKING-life.com

**VIKING LIFE-SAVING EQUIPMENT Iceland ehf.**

VIKING Björgunarbúnaður  
Hvaleyrarbraut 27  
220 Hafnarfjörður  
**Iceland**

Tel.: +354-544-2270  
Fax: +354-544-2271  
e-mail: VIKING-is@VIKING-life.com

**VIKING Life-Saving Equipment (SA) (Pty) Ltd**

Units No.2 Seebrook Park  
210 Chamberlain Road  
4026 Jacobs, Durban  
**South Africa**

Tel: +27 31 4681261  
Fax: +27 31 4681251  
e-mail: VIKINGdbn@VIKING-life.com

**VIKING LIFE-SAVING EQUIPMENT**

**France S.a.r.l.**  
41, Rue Michel Ange  
91026 EVRY CEDEX  
**France**

Tel: +33 (0) 160 87 09 00  
Fax: +33 (0) 160 87 09 01  
e-mail: VIKING-f@VIKING-life.com

**VIKING Life-Saving Equipment B.V.**

P.O. Box 266  
3330 AG Zwijndrecht  
**The Netherlands**

Tel: +31-78-610 28 33  
Fax: +31-78-610 33 61  
e-mail: VIKING-nl@VIKING-life.com

**VIKING LIFE-SAVING EQUIPMENT Iberica S.A.**

c/General Pardinás 112 bis,  
bajo B  
28006 Madrid  
**Spain**

Tel: +34-91-5624833  
Fax: +34-91-5613805  
e-mail: VIKING-e@VIKING-life.com

**VIKING LIFE-SAVING EQUIPMENT A/S**

Veddeler Damm 32 - 34  
20457 Hamburg  
**Germany**

Tel: +49-(0)40 670 10 25  
Fax: +49-(0)40 670 10 67  
e-mail: VIKING-d@VIKING-life.com

**VIKING LIFE-SAVING EQUIPMENT Norway AS**

Idrettsveien  
Straume Næringspark  
NO-5353 Straume (Bergen)  
**Norway**

Tel: +47-815-00- 325  
Fax: +47-56-32 61 10  
e-mail: bergen@VIKING-life.com

**VIKING LIFE-SAVING EQUIPMENT Sweden AB**

Strömfallsvägen 53  
135 49 Tyresö, Stockholm  
**Sweden**

Tel: +46 (0)8 7700170  
Fax: +46 (0)8 7700183  
e-mail: VIKING-se@VIKING-life.com

**VIKING LIFE-SAVING EQUIPMENT Hong Kong Ltd.**

Unit 1, 2/F, Chuan Kei Factory Building  
15-23 Kin Hong Street, Kwai Chung  
New Territories  
**Hong Kong**

Tel: +852 24297878/24252410  
Fax: +852 24236228  
e-mail: VIKING-hk@VIKING-life.com  
VIKING LIFE-SAVING EQUIPMENT Norway AS  
Oluf Onsumsvei 11  
N-0680 Oslo  
**Norway**

Tel: +47-815-00- 325  
Fax: +47-22-68 84 80  
e-mail: VIKING-n@VIKING-life.com

**VIKING LIFE-SAVING EQUIPMENT (Middle East)**

AL JADAF SHIPDOCKING YARD  
P.O.Box 13448  
**Dubai**  
**UAE (United Arab Emirates)**

Tel: +971-4-324 3555  
Fax: +971-4-324 3444  
e-mail: VIKING-uae@VIKING-life.com

**VIKING LIFE-SAVING EQUIPMENT**

**ISTANBUL DENIZCILIK TICARET AS**  
Aydinli mah.Tuzla Mermerciler OSB.  
Gazi Bulvari.4.Sokak.No 12  
TR 34953 Tuzla-Istanbul  
**Turkey**

Tel: +90 216 593 31 79  
Fax: +90 216 593 31 78  
e-mail: VIKINGistanbul@VIKING-life.com

**VIKING LIFE-SAVING EQUIPMENT**

**(America), Inc.**  
1400 NW 159St., Suite 101  
33169 Florida, Miami  
**U.S.A.**

Tel: +1 (305) 614-5800  
Fax: +1 (305) 614-5810  
e-mail: usasales@VIKING-life.com



# The VIKING advantage

VIKING is a global market leader in maritime and fire safety, providing essential safety equipment for commercial shipping, yachting and fishing vessels, offshore installations, defence and fire-fighting sectors.

The unique VIKING network of subsidiaries, agents, 270 authorised servicing stations and worldwide stock points makes us a truly global provider offering cost-effective and convenient service when and where you need it.



1017909 slide guide 03.09



VIKING LIFE-SAVING EQUIPMENT A/S · Saedding Ringvej 13 · DK-6710 Esbjerg V · Denmark  
Tel +45 76 11 81 00 · Fax +45 76 11 81 01 · [www.VIKING-life.com](http://www.VIKING-life.com)

WHEN IT COMES TO  
**safety**  
THINK VIKING™